
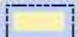


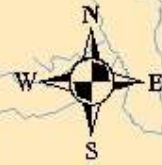


Cook Inlet Watershed Oil and Natural Gas Transmission Pipelines

Legend

- Oil Pipelines
- Natural Gas Pipelines
- Idle/Abandoned Pipelines
-  Platforms
-  State Lands
-  Federal Lands
-  Oil/Gas Fields
- Watershed Boundary

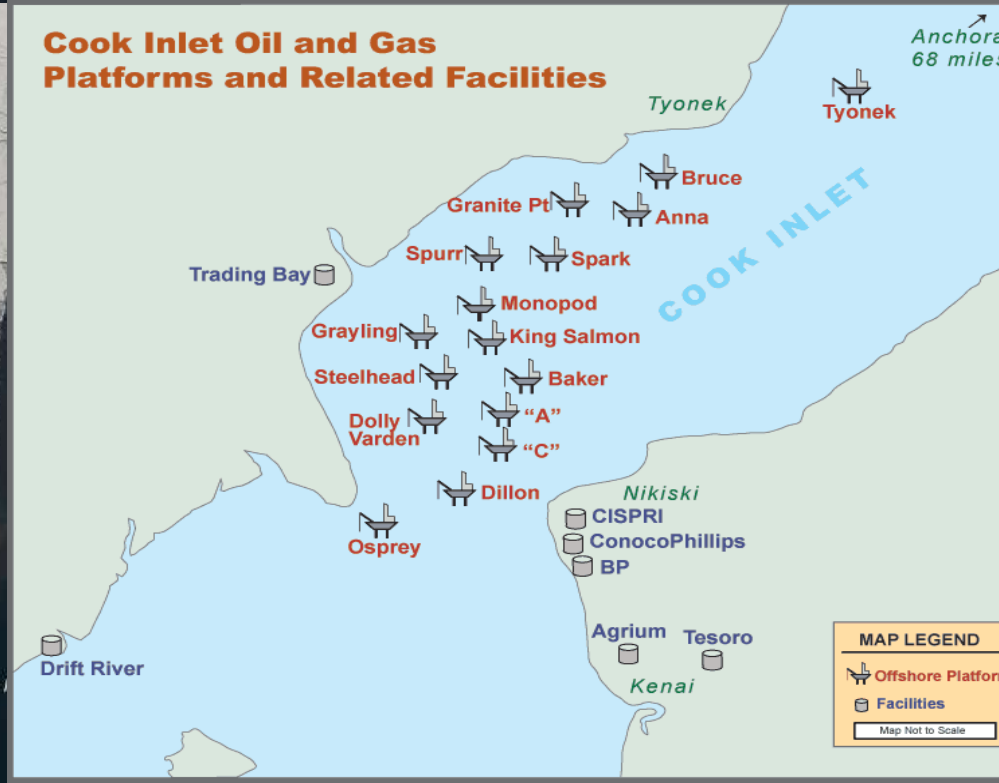


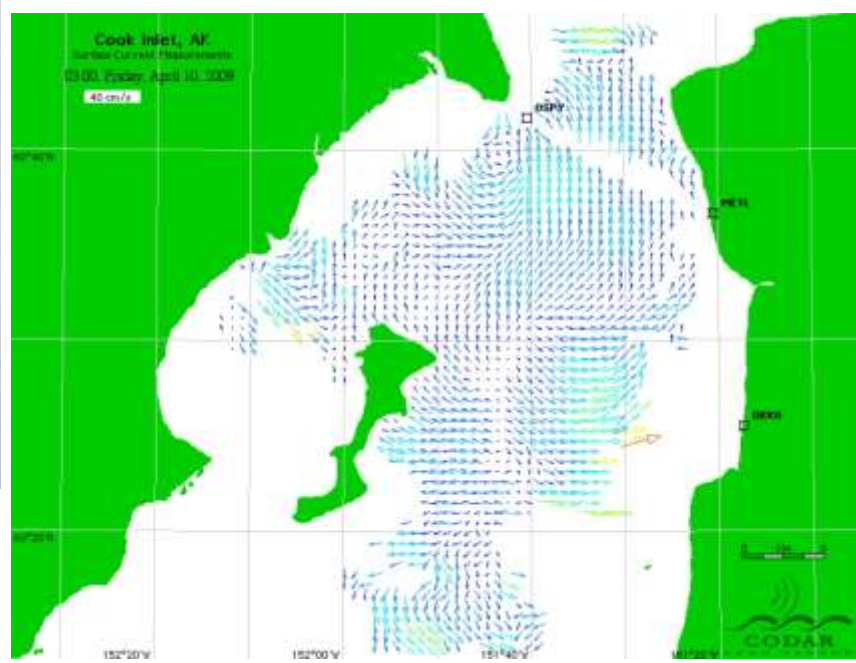
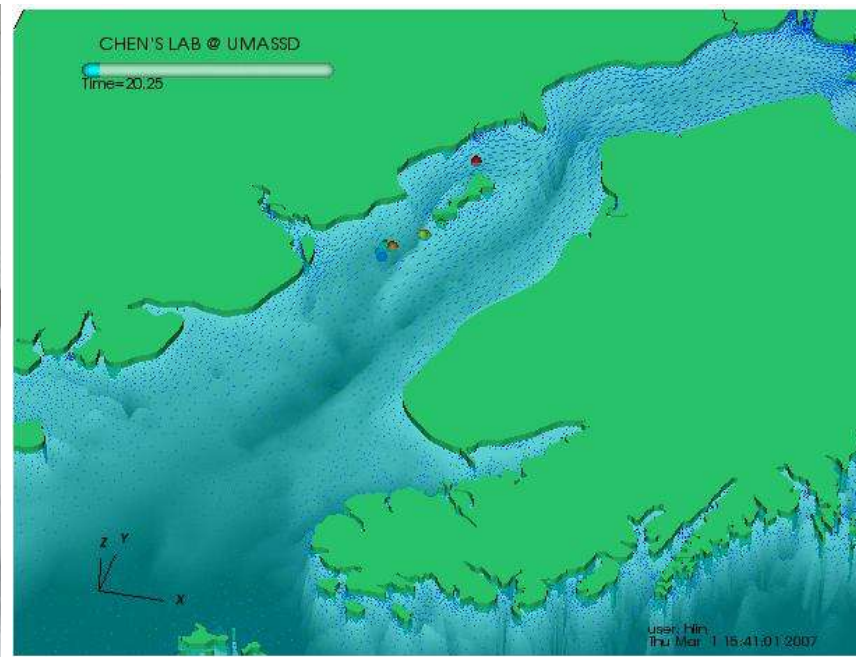
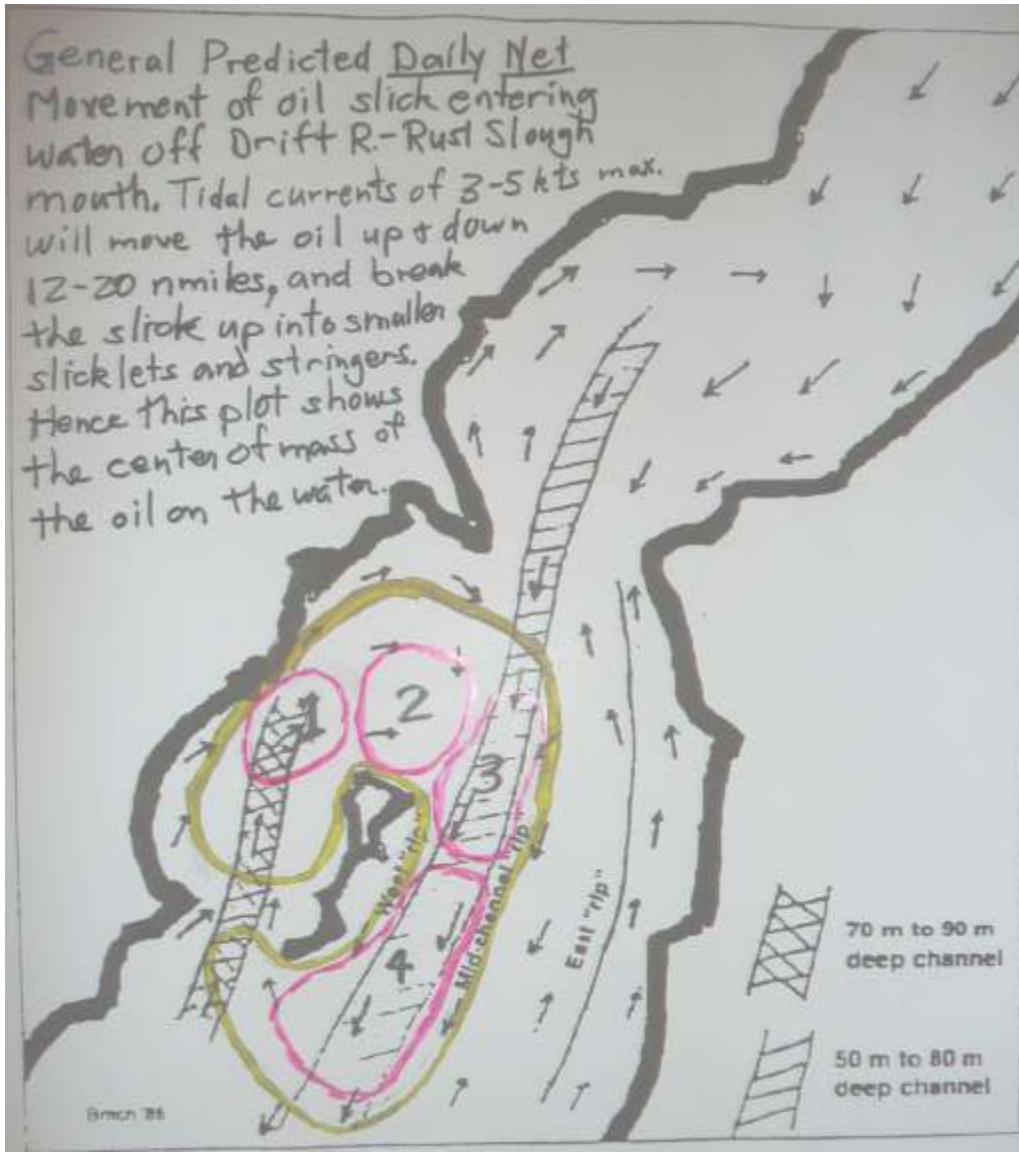
Locations of all towns, oil and natural gas fields, facilities, pipelines, and property boundaries are approximate.

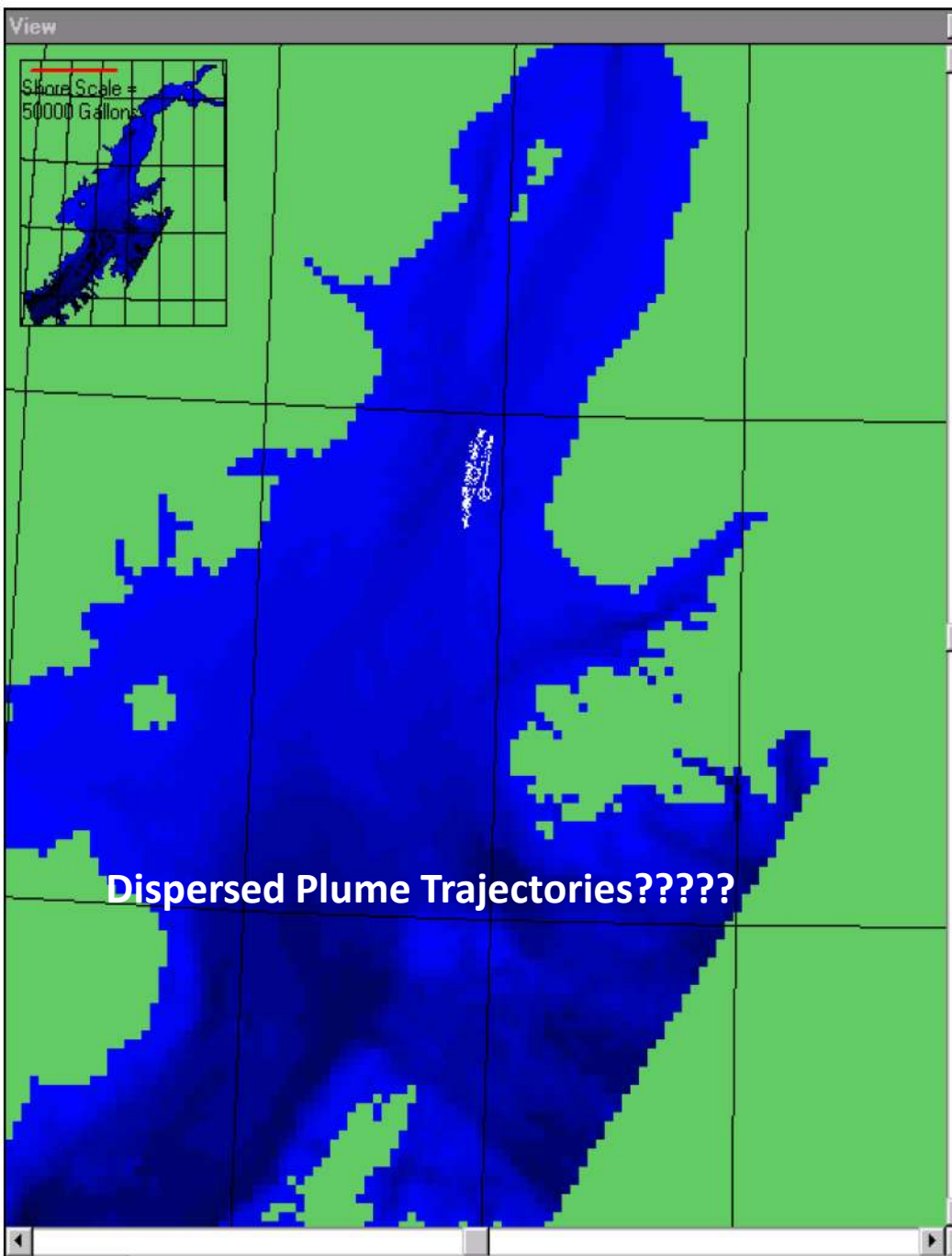
Any questions can be referred to:
 Matt Byrd (CIK GIS)
matt@inletkeeper.org

Projection is AK state plane zone 4









STATUS

Tide at Seldovia: **HIGH**

Start Date and Time: 06/12/98 09:59

% Released: 33

% On Shore:

Simulation Time: 6/13/98 17:25

Tidal Cycles: 2

% Weathered:

Spill Center: 656321, 381708

59 52.6 N, 152 6.8 W

Wind Control

Adjust wind speed.

Wind Speed m/s: 2

Wind Direction (From N is 0): 87

Main

Operation Windows Continue Help

Enter 24 hour starting Date and Time: 06/12/98 09:59

Spill Quantity (Gal): 500000

Spill Type: Bulk Continuous

Weathering Factor %: 4

Adhering Probability %: 50

96 Hours

Model Running. Click within inlet to add current vectors.

Depth: 0 m

State Plane Coordinates: Pointer 724800 N 327599 E

LAT LON (DDD MM.M): 60 28.3 NLat 153 8.2 WLon

Source: 652000 384000 59 49.9 152 3.7

Tide

High

Low

Height .00 m Current .00 m/s

